

Broadband CATV Single Ended 3-Way Active Splitter 50 - 1100 MHz

Rev. V2

Features

- 3-Way Splitter
- Single Ended Input and Outputs
- 4.5 dB and 6 dB Gain Configurations
- Single 5 Volt Supply
- Lead-Free 3 mm 16-Lead PQFN Package
- Halogen-Free “Green” Mold Compound
- RoHS* Compliant and 260°C Reflow Compatible

Description

The MAAM-007239 CATV 3-way active splitter is a GaAs MMIC which exhibits low noise figure and distortion in a lead-free 3 mm 16-lead PQFN plastic package. The design employs a low noise, high linearity amplifier and power splitter functionality. The design features 75 Ω inputs and outputs.

The MAAM-007239 is ideally suited for multi-tuner set top boxes, home gateways, and other broadband internet based appliances.

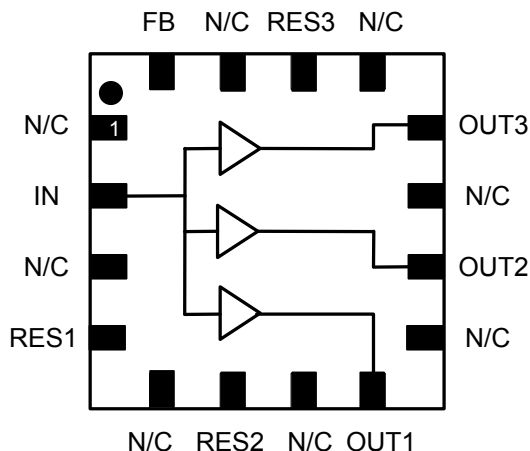
The MAAM-007239 is fabricated using a pHEMT process to realize low noise and low distortion. The process features full passivation for robust performance and reliability.

Ordering Information ^{1,2}

Part Number	Package
MAAM-007239-TR1000	1000 piece reel
MAAM-007239-TR3000	3000 piece reel
MAAM-007239-001SMB	High Isolation Configuration
MAAM-007239-002SMB	Low Current Configuration

1. Reference Application Note M513 for reel size information.
2. All sample boards include 5 loose parts.

Functional Schematic



Pin Configuration

Pin No.	Pin Name	Description
1	N/C	No Connection
2	IN	RF Input
3	N/C	No Connection
4	RES1	Resistor 1
5	N/C	No Connection
6	RES2	Resistor 2
7	N/C	No Connection
8	OUT1	RF Output 1
9	N/C	No Connection
10	OUT2	RF Output 2
11	N/C	No Connection
12	OUT3	RF Output 3
13	N/C	No Connection
14	RES3	Resistor 3
15	N/C	No Connection
16	FB	Feedback
17	Paddle ³	RF and DC Ground

3. The exposed pad centered on the package bottom must be connected to RF and DC ground.

¹ * Restrictions on Hazardous Substances, European Union Directive 2011/65/EU.

Broadband CATV Single Ended 3-Way Active Splitter 50 - 1100 MHz

Rev. V2

Low Current Configuration

Electrical Specifications: $F = 50 - 1000 \text{ MHz}$, $T_A = 25^\circ \text{ C}$, $V_{DD} = 5 \text{ Volts}$, $Z_0 = 75 \Omega$

Parameter	Test Conditions	Units	Min.	Typ.	Max.
Gain	IN to OUT1, IN to OUT2, IN to OUT3	dB	5.0	6.0	7.0
Gain Flatness	IN to OUT1, IN to OUT2, IN to OUT3	dB	-	1.0	1.8
Noise Figure	IN to OUT1, IN to OUT2, IN to OUT3	dB	-	4.5	5.0
Input Return Loss	IN	dB	-	15	-
Output Return Loss	OUT1, OUT2, OUT3	dB	-	20	-
Composite Triple Beat, CTB	132 channels, +15 dBmV/channel at the input	dBc	-	-77	-70
Composite Second Order, CSO	132 channels, +15 dBmV/channel at the input	dBc	-	-65	-56
Crossmodulation, XMOD	132 channels, +15 dBmV/channel at the input	dBc	-	-65	-
Reverse Isolation	OUT1 to IN, OUT2 to IN, OUT3 to IN	dB	-	23	-
Output to Output Isolation	OUT1 to OUT2 or OUT3	dB	-	22	-
P1dB	400 MHz	dBm	-	17	-
OIP3	50 MHz / 1 GHz Two Tones at 6 MHz Spacing, $P_{IN} = -10 \text{ dBm}$ per Tone	dBm	-	23	-
OIP2	50 MHz / 1 GHz Two Tones at 6 MHz Spacing, $P_{IN} = -10 \text{ dBm}$ per Tone	dBm	-	48	-
I_{DD}	$V_{DD} = 5 \text{ Volts}$	mA	-	125	150

High Isolation Configuration

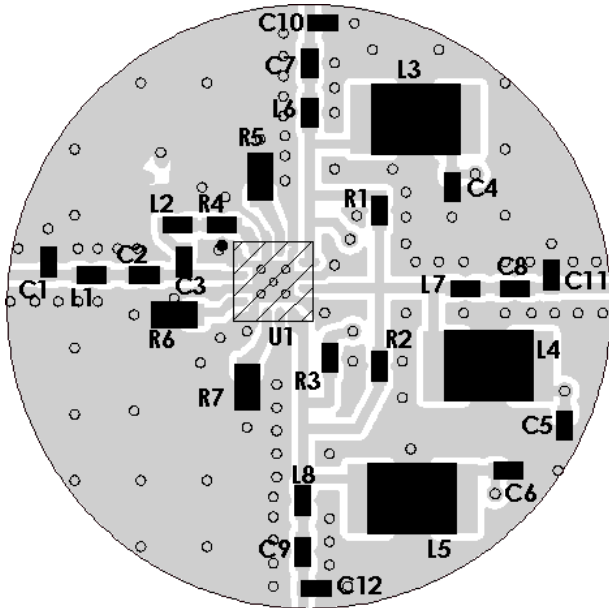
Typical Performance: $F = 50 - 1000 \text{ MHz}$, $T_A = 25^\circ \text{ C}$, $V_{DD} = 5 \text{ Volts}$, $Z_0 = 75 \Omega$

Parameter	Test Conditions	Units	Min.	Typ.	Max.
Gain	IN to OUT1, IN to OUT2, IN to OUT3	dB	-	4.6	-
Gain Flatness	IN to OUT1, IN to OUT2, IN to OUT3	dB	-	0.8	-
Noise Figure	IN to OUT1, IN to OUT2, IN to OUT3	dB	-	4.5	-
Input Return Loss	IN	dB	-	17	-
Output Return Loss	OUT1, OUT2, OUT3	dB	-	12	-
Composite Triple Beat, CTB	132 channels, +15 dBmV/channel at the input	dBc	-	-83	-
Composite Second Order, CSO	132 channels, +15 dBmV/channel at the input	dBc	-	-70	-
Crossmodulation, XMOD	132 channels, +15 dBmV/channel at the input	dBc	-	-65	-
Reverse Isolation	OUT1 to IN, OUT2 to IN, OUT3 to IN	dB	-	25	-
Output to Output Isolation	OUT1 to OUT2 or OUT3	dB	-	32	-
P1dB	400 MHz	dBm	-	19	-
OIP3	50 MHz / 1 GHz Two Tones at 6 MHz Spacing, $P_{IN} = -10 \text{ dBm}$ per Tone	dBm	-	27	-
OIP2	50 MHz / 1 GHz Two Tones at 6 MHz Spacing, $P_{IN} = -10 \text{ dBm}$ per Tone	dBm	-	52	-
I_{DD}	$V_{DD} = 5 \text{ Volts}$	mA	-	210	-

Broadband CATV Single Ended 3-Way Active Splitter 50 - 1100 MHz

Rev. V2

Recommended PCB configuration Low Current Configuration

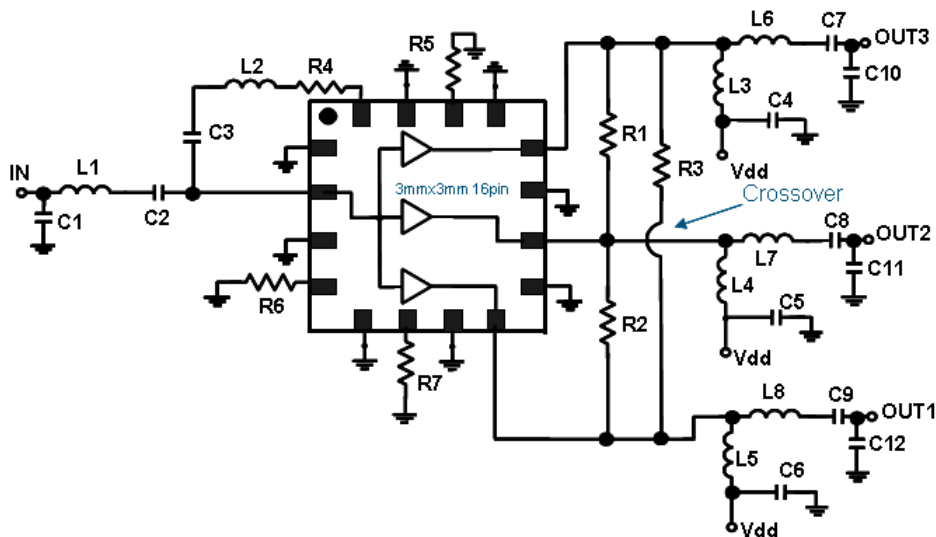


Off-Chip Component Values⁴ Low Current Configuration

Component	Value	Package
C1	1 pF	0402
C2 - C9	0.01 μ F	0402
C10 - C12	0.5 pF	0402
L1, L2	11 nH	0402
L3 - L5	1 μ H	1210
L6 - L8	12 nH	0402
R1 - R3	620 Ω	0402
R4	68 Ω	0402
R5 - R7	18 Ω	0603

4. L3 - L5 supplied from EPCOS, part number B82422A1102K100

Schematic Including Off-Chip Components Low Current Configuration



Broadband CATV Single Ended 3-Way Active Splitter 50 - 1100 MHz

Rev. V2

Absolute Maximum Ratings^{5,6,7}

Parameter	Absolute Maximum
Input Power	12 dBm
V _{BIAS}	10 V
Operating Temperature	-40°C to +85°C
Junction Temperature ⁸	150°C
Storage Temperature	-65°C to +125°C

- Exceeding any one or combination of these limits may cause permanent damage to this device.
- MACOM does not recommend sustained operation near these survivability limits.
- These operating conditions will ensure MTTF > 1 x 10⁶ hours.
- Junction Temperature (T_J) = T_C + (Θ_{Jc}) * (V*I)
Typical thermal resistance (Θ_{Jc}) = 42°C/W.
 - For T_C = 25°C,
(Low Current Configuration) T_J = 51°C @ 5 V, 125 mA
(High Current Configuration) T_J = 69°C @ 5 V, 210 mA
 - For T_C = 85°C,
(Low Current Configuration) T_J = 111°C @ 5 V, 125 mA
(High Current Configuration) T_J = 129°C @ 5 V, 210 mA

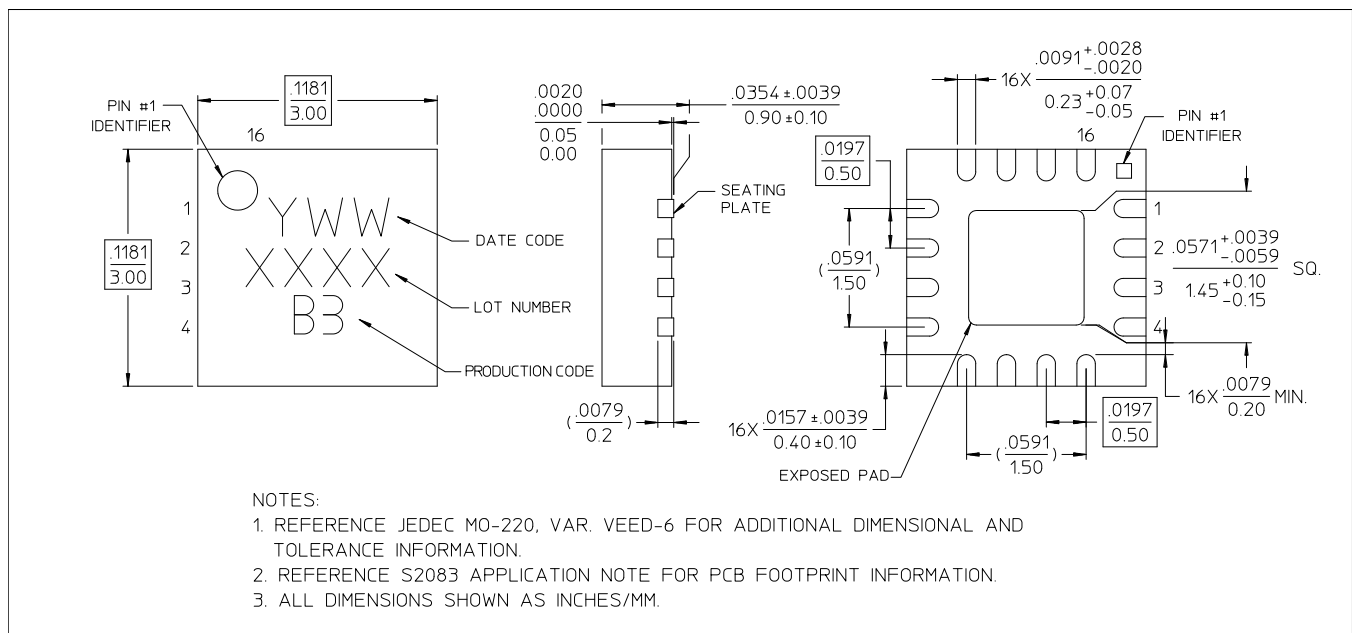
Handling Procedures

Please observe the following precautions to avoid damage:

Static Sensitivity

Gallium Arsenide Integrated Circuits are sensitive to electrostatic discharge (ESD) and can be damaged by static electricity. Proper ESD control techniques should be used when handling these devices.

Lead-Free 3 mm 16-Lead PQFN[†]



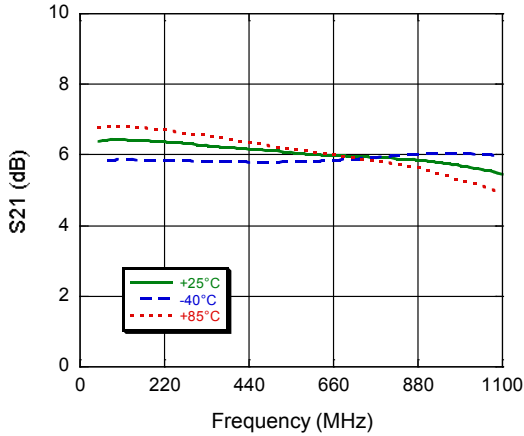
[†] Reference Application Note S2083 for lead-free solder reflow recommendations.
Meets JEDEC moisture sensitivity level 1 requirements.
Plating is 100% matte tin over copper.

Broadband CATV Single Ended 3-Way Active Splitter 50 - 1100 MHz

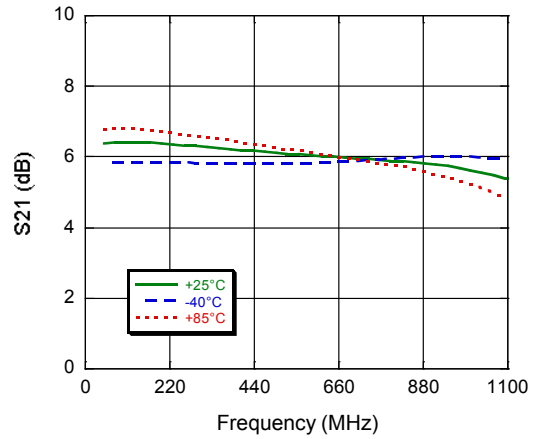
Rev. V2

Typical Performance Curves: Low Current Configuration

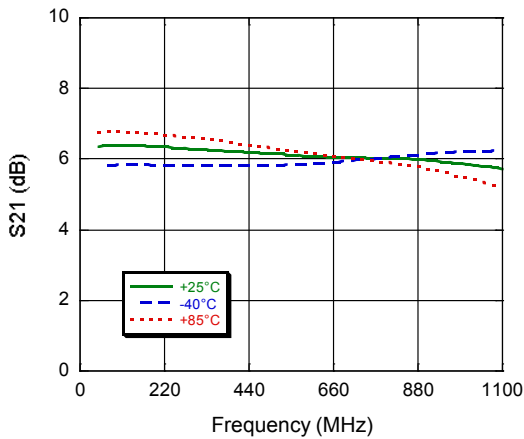
Gain - OUT1



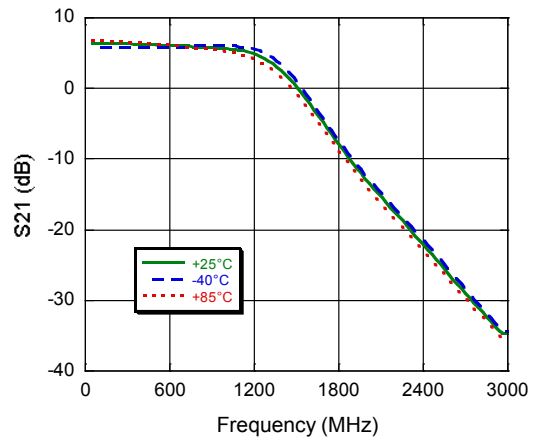
Gain - OUT2



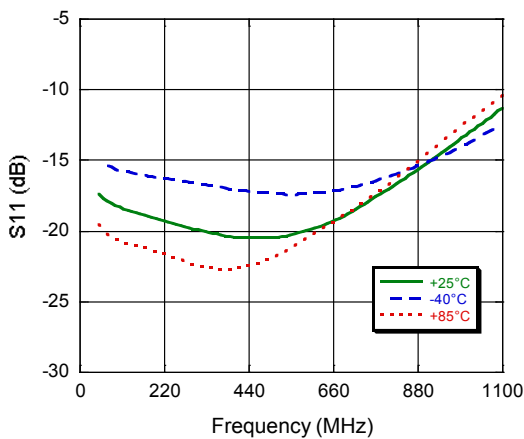
Gain - OUT3



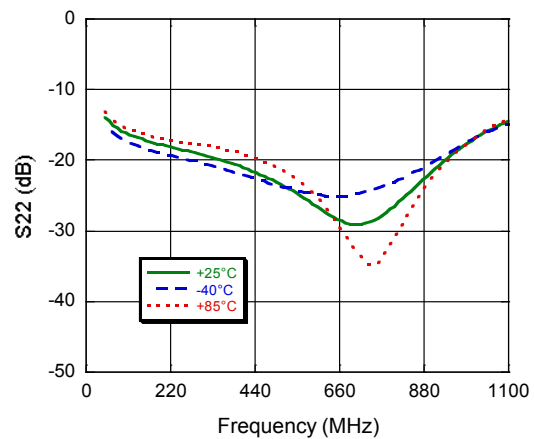
Gain - typical all ports - to 3 GHz



Input Return Loss



Out1 - Return Loss

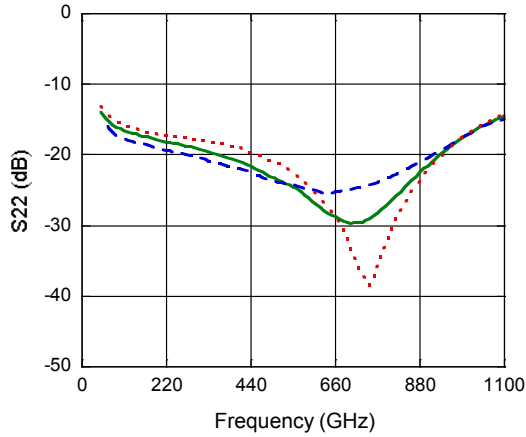


Broadband CATV Single Ended 3-Way Active Splitter 50 - 1100 MHz

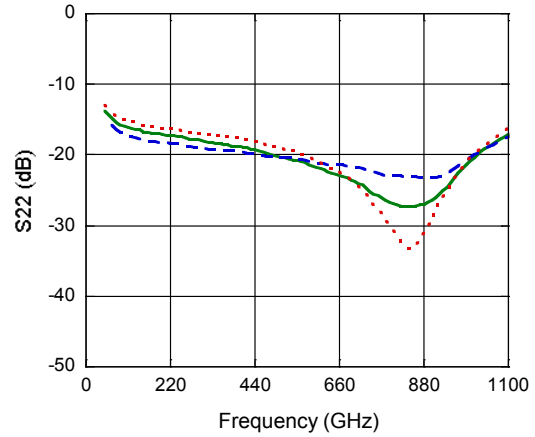
Rev. V2

Typical Performance Curves: Low Current Configuration

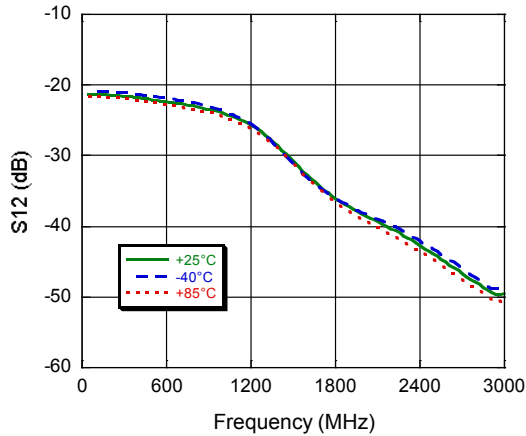
Out2 - Return Loss



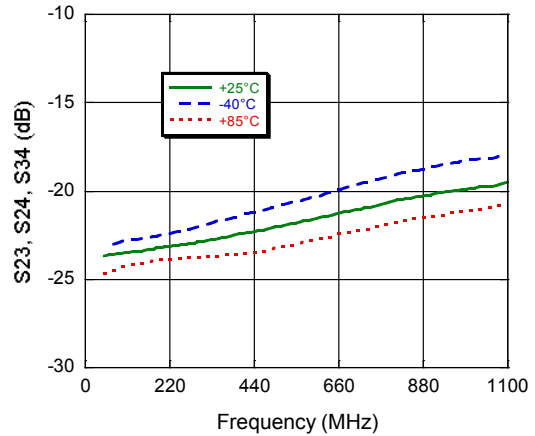
Out3 - Return Loss



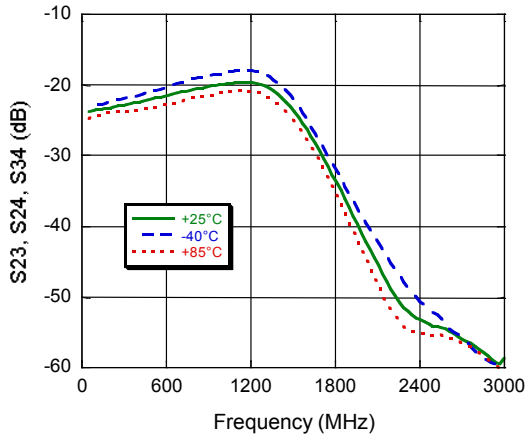
Reverse Isolation



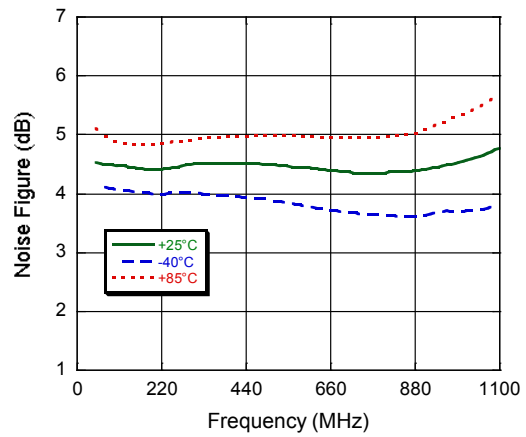
OUT - OUT Isolation - to 1 GHz



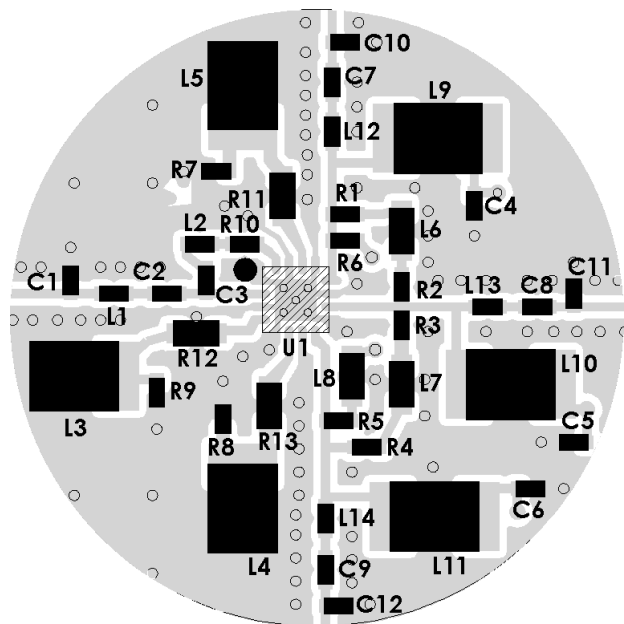
OUT - OUT Isolation - to 3 GHz



Noise Figure - Typical for all ports



Recommended PCB configuration
High Isolation Configuration

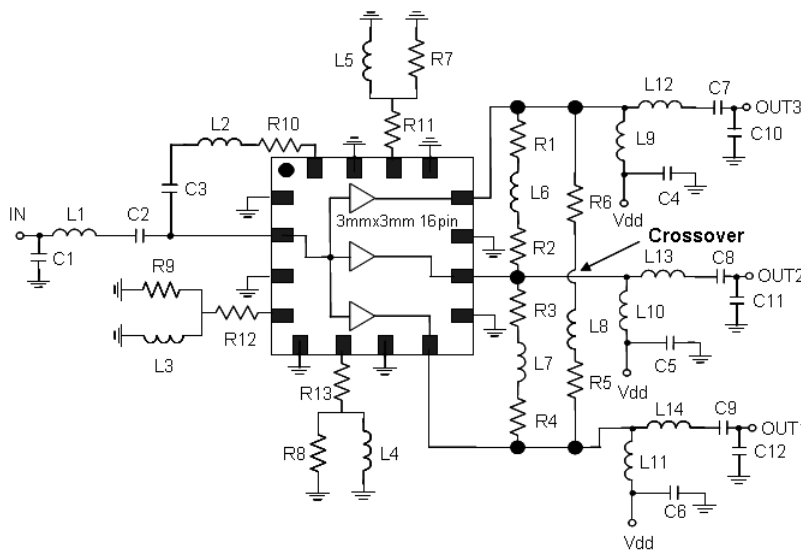


Off-Chip Component Values⁹
High Isolation Configuration

Component	Value	Package
C1	1 pF	0402
C2 - C9	0.01 μ F	0402
C10 - C12	0.5 pF	0402
L1	11 nH	0402
L2	19 nH	0402
L3 - L5, L9 - L11	1 μ H	1210
L6	100 nH	0603
L7	110 nH	0603
L8	82 nH	0603
L12 - L14	12 nH	0402
R1 - R6	270 Ω	0402
R7 - R9	22 Ω	0402
R10	100 Ω	0402
R11 - R13	8.2 Ω	0603

9. L3 - L5 and L9 - L11 supplied from EPCOS, part number B82422A1102K100.

Schematic Including Off-Chip Components
High Isolation Configuration

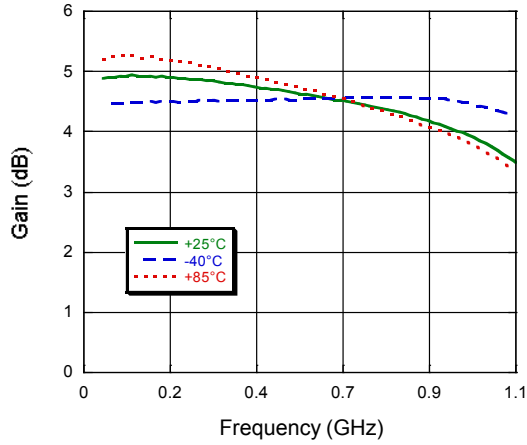


Broadband CATV Single Ended 3-Way Active Splitter 50 - 1100 MHz

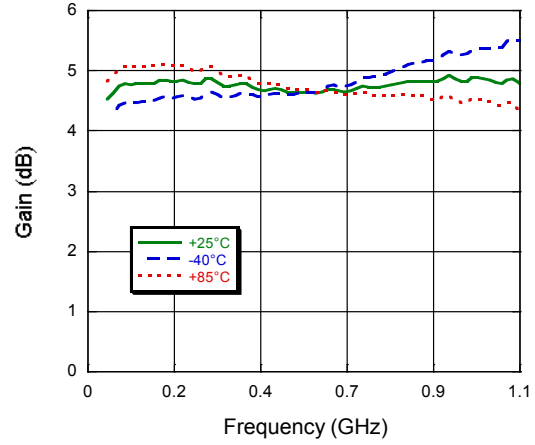
Rev. V2

Typical Performance Curves: High Isolation Configuration

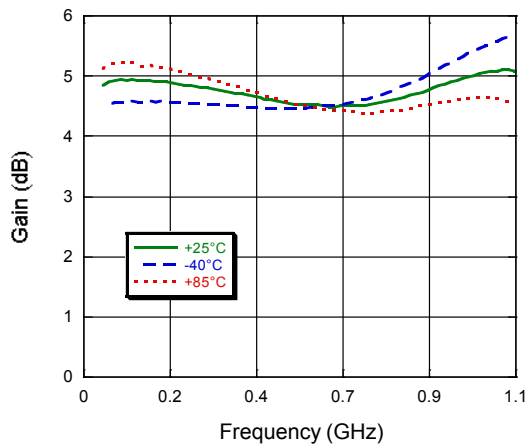
Gain - OUT1



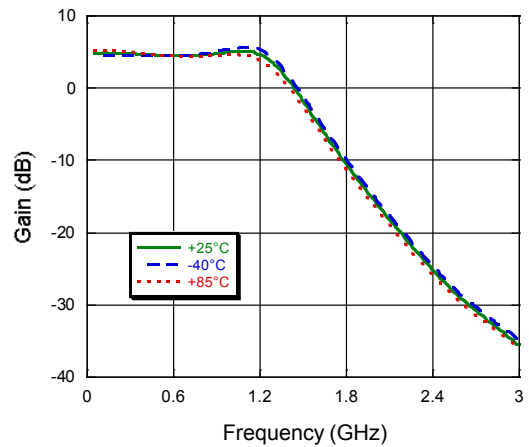
Gain - OUT2



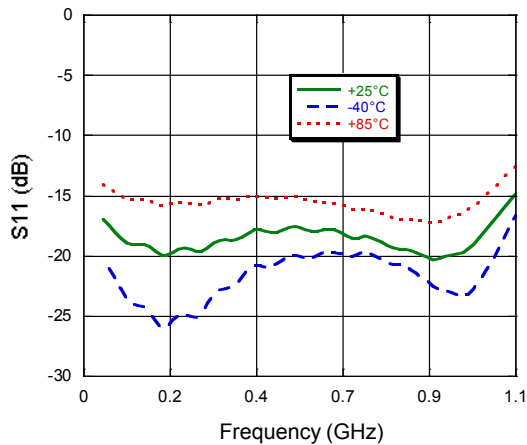
Gain - OUT3



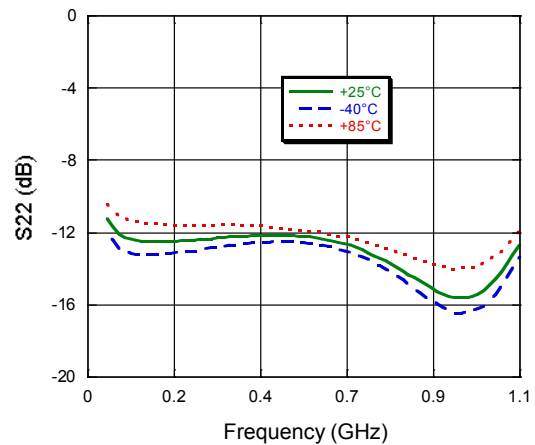
Gain - typical all ports - to 3 GHz



Input Return Loss



Out1 - Return Loss

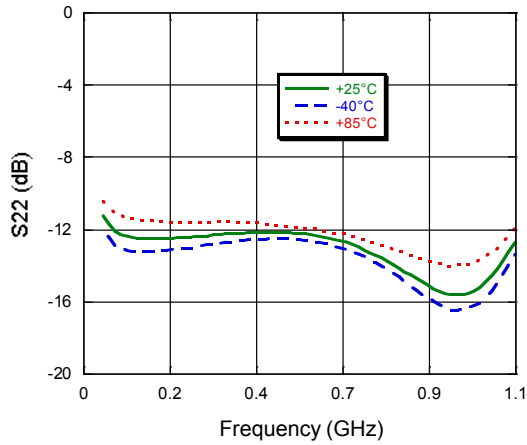


Broadband CATV Single Ended 3-Way Active Splitter 50 - 1100 MHz

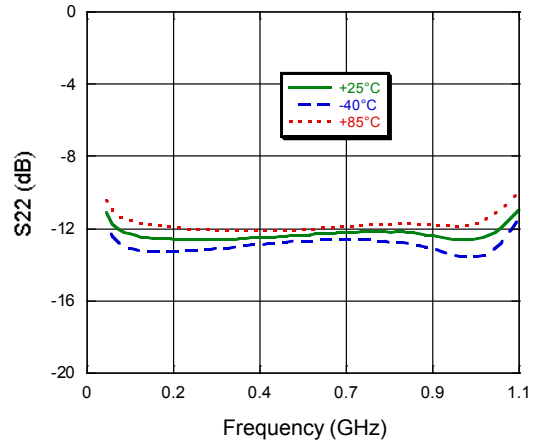
Rev. V2

Typical Performance Curves: High Isolation Configuration

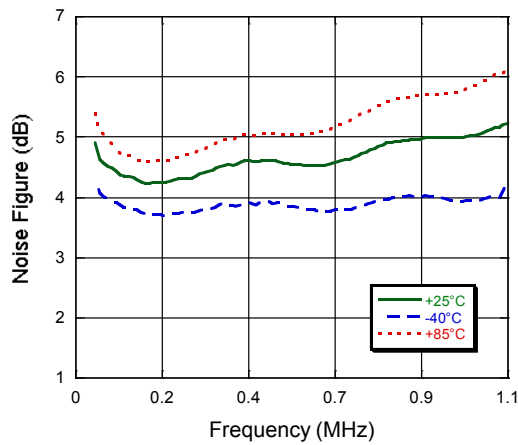
OUT2 - Return Loss



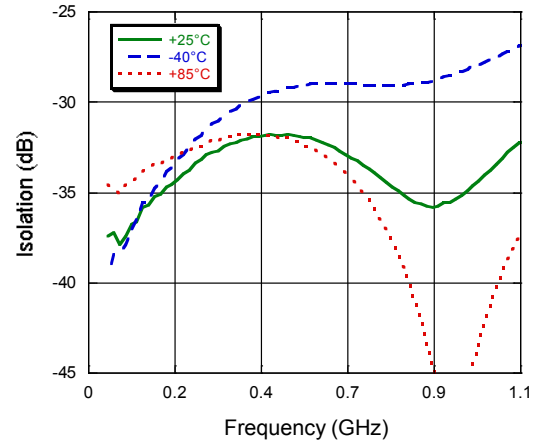
OUT3 - Return Loss



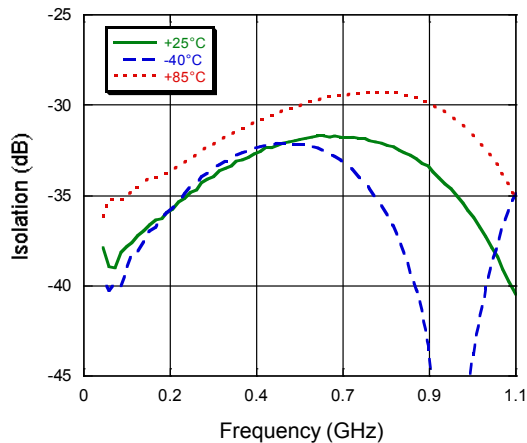
Noise Figure - Typical for all ports



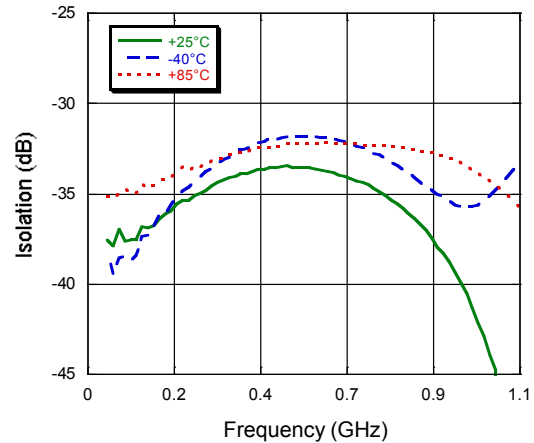
OUT1 - OUT2 Isolation



OUT1 - OUT3 Isolation



OUT2 - OUT3 Isolation



MACOM Technology Solutions Inc. All rights reserved.

Information in this document is provided in connection with MACOM Technology Solutions Inc ("MACOM") products. These materials are provided by MACOM as a service to its customers and may be used for informational purposes only. Except as provided in MACOM's Terms and Conditions of Sale for such products or in any separate agreement related to this document, MACOM assumes no liability whatsoever. MACOM assumes no responsibility for errors or omissions in these materials. MACOM may make changes to specifications and product descriptions at any time, without notice. MACOM makes no commitment to update the information and shall have no responsibility whatsoever for conflicts or incompatibilities arising from future changes to its specifications and product descriptions. No license, express or implied, by estoppel or otherwise, to any intellectual property rights is granted by this document.

THESE MATERIALS ARE PROVIDED "AS IS" WITHOUT WARRANTY OF ANY KIND, EITHER EXPRESS OR IMPLIED, RELATING TO SALE AND/OR USE OF MACOM PRODUCTS INCLUDING LIABILITY OR WARRANTIES RELATING TO FITNESS FOR A PARTICULAR PURPOSE, CONSEQUENTIAL OR INCIDENTAL DAMAGES, MERCHANTABILITY, OR INFRINGEMENT OF ANY PATENT, COPYRIGHT OR OTHER INTELLECTUAL PROPERTY RIGHT. MACOM FURTHER DOES NOT WARRANT THE ACCURACY OR COMPLETENESS OF THE INFORMATION, TEXT, GRAPHICS OR OTHER ITEMS CONTAINED WITHIN THESE MATERIALS. MACOM SHALL NOT BE LIABLE FOR ANY SPECIAL, INDIRECT, INCIDENTAL, OR CONSEQUENTIAL DAMAGES, INCLUDING WITHOUT LIMITATION, LOST REVENUES OR LOST PROFITS, WHICH MAY RESULT FROM THE USE OF THESE MATERIALS.

MACOM products are not intended for use in medical, lifesaving or life sustaining applications. MACOM customers using or selling MACOM products for use in such applications do so at their own risk and agree to fully indemnify MACOM for any damages resulting from such improper use or sale.