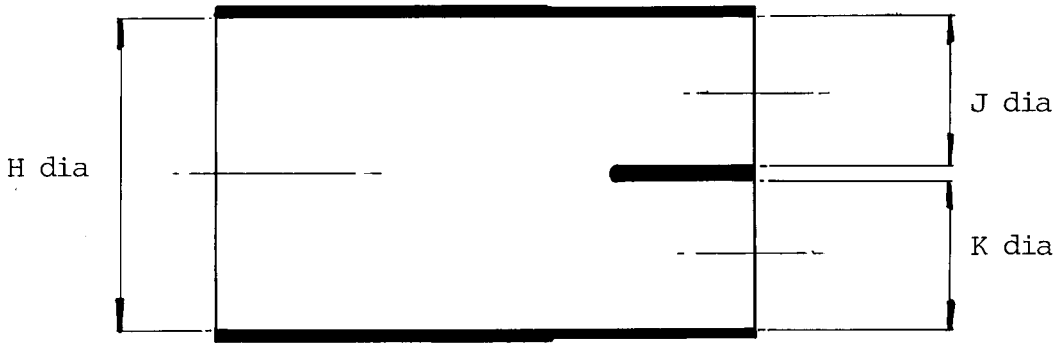
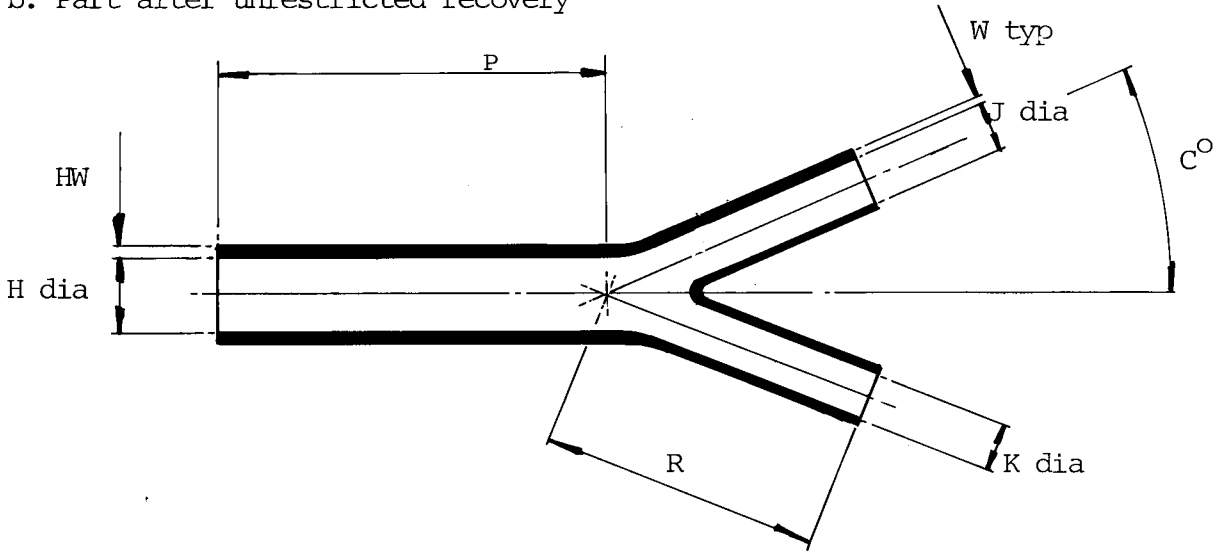


342W012

a. Part as supplied.



b. Part after unrestricted recovery



Dimensions (in millimetres)

Part No.	H		J		K		P	R	HW	W	C
	Min a	Max b	Min a	Max b	Min a	Max b					
342W012	19	9,6	13	6,3	13	6,3	51	30	1,7	0,8	22½°

Drawn G. EVANS

Checked *EV*

Issue 4

Date JUNE 1982

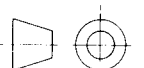
Conforms to ISO Recommendations
3rd Angle Projection
Not to scale

Approval

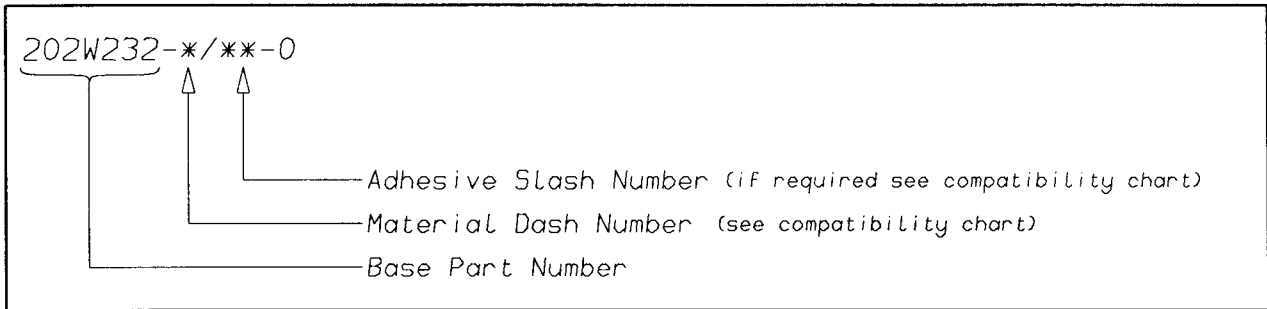
Design *McL*

MKTG *JB*

Q.C. *MR*



(Ordering Information)



(COMPATIBILITY CHART)

MATERIAL DASH NUMBER	MATERIAL DESCRIPTION	COATING SLASH NUMBER
-3	POLYOLEFIN, SEMI-RIGID	/42, /86
-4	POLYOLEFIN, FLEXIBLE	/42, /86
-25	ELASTOMER, FLUID RESISTANT	/86, /225

AS SUPPLIED DIMENSIONS ARE FOR UNCOATED PARTS,
WHEN COATING IS ADDED, ENTRY DIAMETERS WILL REDUCE BY 1.5mm MAX.

POTTING PORTS ARE OPTIONAL
WHEN SPECIFIED BY SUFFIX "-00"
THEY WILL BE LOCATED AS SHOWN

Raychem
Electronics OEM Division Europe
Swindon, Wiltshire, England.
Telephone: (01793) 528171 Fax: 573923